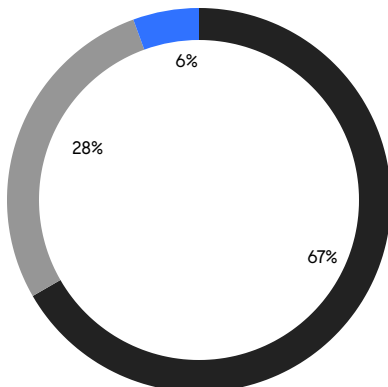
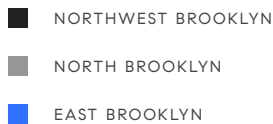


BROOKLYN WEEKLY LUXURY REPORT



451 DEGRAW STREET

RESIDENTIAL CONTRACTS
\$2 MILLION AND UP



18

CONTRACTS SIGNED
THIS WEEK

\$69,635,000

TOTAL CONTRACT VOLUME

The Brooklyn luxury real estate market, defined as all properties priced \$2M and above, saw 18 contracts signed this week, made up of 14 condos, and 4 houses. The previous week saw 26 deals. For more information or data, please reach out to a Compass agent.

\$3,868,612

AVERAGE ASKING PRICE

\$3,142,500

MEDIAN ASKING PRICE

\$1,640

AVERAGE PPSF

0%

AVERAGE DISCOUNT

\$69,635,000

TOTAL VOLUME

99

AVERAGE DAYS ON MARKET

17 Willow Place in Brooklyn Heights entered contract this week, with a last asking price of \$10,000,000. Designed and completed in 2012, this modern townhouse spans approximately 4,600 square feet with 4 beds and 4 baths. It features unobstructed east and west exposures, a 25-foot-wide footprint, a 3-story curved staircase, a two-story window wall, multiple private garden spaces, a double-height living room with wood-burning fireplace, and much more.

Also signed this week was 218 North 5th Street in Williamsburg, with a last asking price of \$7,250,000. Built in 2013, this townhouse spans 4,563 square feet with 4 beds and 5 baths. It features a 24-foot-wide footprint with four stories, cellar, and rooftop, multiple outdoor spaces, high ceilings, polished concrete and white oak flooring, custom wood closets, abundant garage space, and much more.

14

CONDO DEAL(S)

0

CO-OP DEAL(S)

4

TOWNHOUSE DEAL(S)

\$3,242,143

AVERAGE ASKING PRICE

\$0

AVERAGE ASKING PRICE

\$6,061,250

AVERAGE ASKING PRICE

\$3,065,000

MEDIAN ASKING PRICE

\$0

MEDIAN ASKING PRICE

\$5,975,000

MEDIAN ASKING PRICE

\$1,678

AVERAGE PPSF

\$1,515

AVERAGE PPSF

2,013

AVERAGE SQFT

3,849

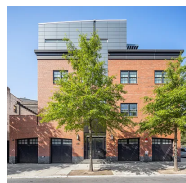
AVERAGE SQFT



17 WILLOW PL

Brooklyn Heights

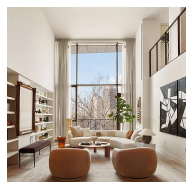
TYPE	TOWNHOUSE	STATUS	CONTRACT	ASK	\$10,000,000	INITIAL	\$10,000,000
SQFT	4,600	PPSF	\$2,174	BEDS	4	BATHS	3.5
FEES	\$3,838	DOM	7				



218 NORTH 5TH ST

Williamsburg

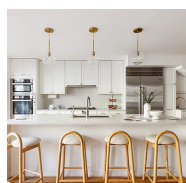
TYPE	TOWNHOUSE	STATUS	CONTRACT	ASK	\$7,250,000	INITIAL	\$7,995,000
SQFT	4,563	PPSF	\$1,589	BEDS	4	BATHS	3
FEES	\$1,272	DOM	290				



90 FURMAN ST #N411

Brooklyn Heights

TYPE	CONDO	STATUS	CONTRACT	ASK	\$6,150,000	INITIAL	\$6,150,000
SQFT	3,550	PPSF	\$1,733	BEDS	4	BATHS	2.5
FEES	\$8,486	DOM	27				



22 CHEEVER PL

Cobble Hill

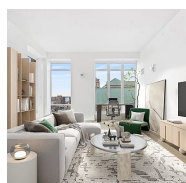
TYPE	TOWNHOUSE	STATUS	CONTRACT	ASK	\$4,700,000	INITIAL	\$4,700,000
SQFT	4,335	PPSF	\$1,085	BEDS	6	BATHS	5
FEES	\$2,055	DOM	16				



1 PROSPECT PARK WEST #8C

Park Slope

TYPE	CONDO	STATUS	CONTRACT	ASK	\$4,250,000	INITIAL	\$4,250,000
SQFT	1,660	PPSF	\$2,561	BEDS	3	BATHS	2.5
FEES	\$4,631	DOM	18				

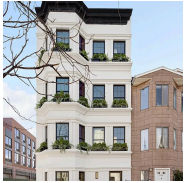


265 STATE ST #1601

Boerum Hill

TYPE	CONDO	STATUS	CONTRACT	ASK	\$4,000,000	INITIAL	\$4,000,000
SQFT	2,500	PPSF	\$1,600	BEDS	4	BATHS	3.5
FEES	\$6,626	DOM	N/A				

Compass is a licensed real estate broker and abides by Equal Housing Opportunity laws. All material presented herein is intended for informational purposes only. Information is compiled from sources deemed reliable but is subject to errors, omissions, changes in price, condition, sale, or withdrawal without notice. No statement is made as to the accuracy of any description. All measurements and square footages are approximate. This is not intended to solicit property already listed. Nothing herein shall be construed as legal, accounting or other professional advice outside the realm of real estate brokerage.



668 BALTIC ST #3

Park Slope

TYPE	CONDO	STATUS	CONTRACT	ASK	\$3,825,000	INITIAL	\$3,825,000
SQFT	N/A	PPSF	N/A	BEDS	4	BATHS	3
FEES	\$1,120	DOM	N/A				



323 BERGEN ST #405W

Boerum Hill

TYPE	CONDO	STATUS	CONTRACT	ASK	\$3,450,000	INITIAL	\$3,375,000
SQFT	1,766	PPSF	\$1,954	BEDS	3	BATHS	2.5
FEES	\$4,392	DOM	194				



110 PRESIDENT ST #2

Columbia Street Waterfront

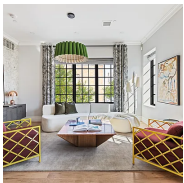
TYPE	CONDO	STATUS	CONTRACT	ASK	\$3,150,000	INITIAL	\$3,150,000
SQFT	2,153	PPSF	\$1,464	BEDS	3	BATHS	3.5
FEES	\$1,628	DOM	20				



8 SOUTH 4TH ST #33A

Williamsburg

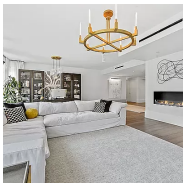
TYPE	CONDO	STATUS	CONTRACT	ASK	\$3,135,000	INITIAL	\$3,135,000
SQFT	1,319	PPSF	\$2,377	BEDS	2	BATHS	2.5
FEES	\$2,670	DOM	N/A				



118 DOUGLASS ST #PH

Boerum Hill

TYPE	CONDO	STATUS	CONTRACT	ASK	\$2,995,000	INITIAL	\$2,995,000
SQFT	2,146	PPSF	\$1,396	BEDS	3	BATHS	3.5
FEES	\$1,593	DOM	14				



429 KENT AVE #L53

Williamsburg

TYPE	CONDO	STATUS	CONTRACT	ASK	\$2,850,000	INITIAL	N/A
SQFT	3,486	PPSF	\$818	BEDS	3	BATHS	4
FEES	\$7,379	DOM	N/A				

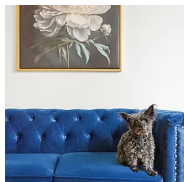
Compass is a licensed real estate broker and abides by Equal Housing Opportunity laws. All material presented herein is intended for informational purposes only. Information is compiled from sources deemed reliable but is subject to errors, omissions, changes in price, condition, sale, or withdrawal without notice. No statement is made as to the accuracy of any description. All measurements and square footages are approximate. This is not intended to solicit property already listed. Nothing herein shall be construed as legal, accounting or other professional advice outside the realm of real estate brokerage.



29 HURON ST #PHEE

Greenpoint

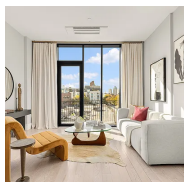
TYPE	CONDO	STATUS	CONTRACT	ASK	\$2,495,000	INITIAL	\$2,495,000
SQFT	1,227	PPSF	\$2,034	BEDS	2	BATHS	2
FEES	\$2,514	DOM	N/A				



225 EASTERN PKWY #3E

Crown Heights

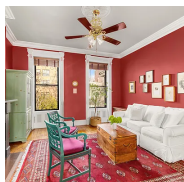
TYPE	CONDO	STATUS	CONTRACT	ASK	\$2,395,000	INITIAL	\$2,395,000
SQFT	2,000	PPSF	\$1,198	BEDS	4	BATHS	3
FEES	\$2,626	DOM	96				



419 MANHATTAN AVE #5

Williamsburg

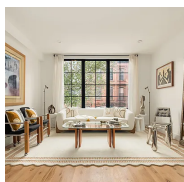
TYPE	CONDO	STATUS	CONTRACT	ASK	\$2,300,000	INITIAL	\$2,300,000
SQFT	1,243	PPSF	\$1,851	BEDS	3	BATHS	2
FEES	\$1,756	DOM	N/A				



301A 13TH ST

Park Slope

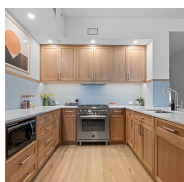
TYPE	TOWNHOUSE	STATUS	CONTRACT	ASK	\$2,295,000	INITIAL	\$2,295,000
SQFT	1,896	PPSF	\$1,211	BEDS	3	BATHS	2
FEES	\$427	DOM	20				



345 BERGEN ST #4

Boerum Hill

TYPE	CONDO	STATUS	CONTRACT	ASK	\$2,200,000	INITIAL	\$2,200,000
SQFT	1,554	PPSF	\$1,416	BEDS	3	BATHS	2.5
FEES	\$2,073	DOM	13				



100 JAY ST #14H

Dumbo

TYPE	CONDO	STATUS	CONTRACT	ASK	\$2,195,000	INITIAL	\$2,395,000
SQFT	1,555	PPSF	\$1,412	BEDS	3	BATHS	2.5
FEES	\$3,352	DOM	469				

Compass is a licensed real estate broker and abides by Equal Housing Opportunity laws. All material presented herein is intended for informational purposes only. Information is compiled from sources deemed reliable but is subject to errors, omissions, changes in price, condition, sale, or withdrawal without notice. No statement is made as to the accuracy of any description. All measurements and square footages are approximate. This is not intended to solicit property already listed. Nothing herein shall be construed as legal, accounting or other professional advice outside the realm of real estate brokerage.